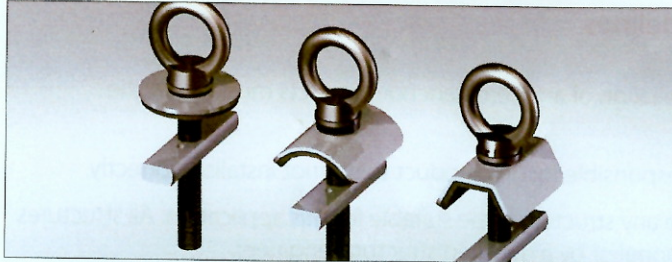




Hi-Safe RA10 Installation Instructions



The Hi-Safe RA10 is a permanent anchor system intended for use on standard cladding roofs. By purchasing the appropriate base plate, the Hi-Safe RA10 can be used on flat, round and square roof profiles.



Supplied:	Additional tools:
Eyebolt	27 mm hole saw
Base Plate	Tightening bar
Setting Block	Drill



Step One

Locate the desired position on the roof and remove the existing tek screw.



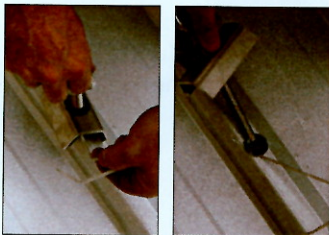
Step Two

Using a 27 mm hole saw, core drill through the cladding and steel purlin below.



Step Three

Push the setting block through the hole and locate horizontally inside the purlin. Be sure to use the string so the block doesn't fall through.



Step Four

Locate the setting block thread inline with the core drilled hole. Screw the anchor assembly into the setting block.



Step Five

Turn and tighten the eyebolt until the thread is all the way through and the shaped base plate is located onto the cladding roof.



Step Six

Tighten the eyebolt using a bar until it compresses the seal and base plate onto the roof tightly. Keep tightening until the assembly ceases to turn which should ensure optimal compression.

The Hi-Safe RA10 is now installed.

